

- **Flowrate 1-20uL**
- **Universal starter cell for oxidation / reduction / activation**
- **Virtually zero sample adsorption**
- **Easy electrode exchange, supplied with various electrodes**

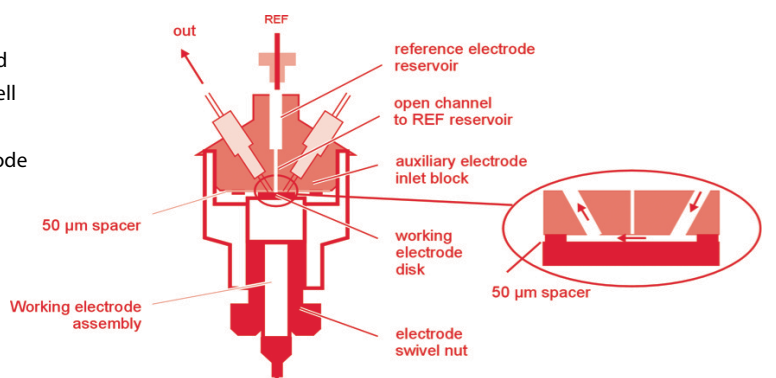
The ReactorCell™ is a basic starter cell, ideally suited for oxidation, reduction and/or activation of compounds that pass through the cell. For single component analysis, the cell can be used in infusion mode by simply connecting it to a syringe pump for direct EC/MS experiments. For multi-component analyses, the electrochemical cell can be positioned after the LC column to perform LC/EC/MS experiments on the separated components. The cell is controlled via the ROXY Potentiostat while the flow rate and working potential can be optimized using the Dialogue software. The ReactorCell is based on a thin-layer flow cell concept, comprising of a very smooth working electrode surface over which the sample is flowing. This results in virtually zero sample adsorption unlike porous flow through electrodes which are prone to adsorption and carry over. The cell can be disassembled within seconds for easy cleaning of the working electrode and cell compartment. The ReactorCell is supplied with 4 working electrodes, Pt, Au, Glassy Carbon (GC), and Magic Diamond



(MD), which can be quickly and easily exchanged. Magic Diamond (MD) also known as Boron Doped Diamond (BDD) is the workhorse and electrode of choice for oxidation reactions up to a maximum applicable voltage of 4.0 V. Pt and Au are typically employed for specific reactions such as hydroxylation or N-oxidation.

Schematics ReactorCell

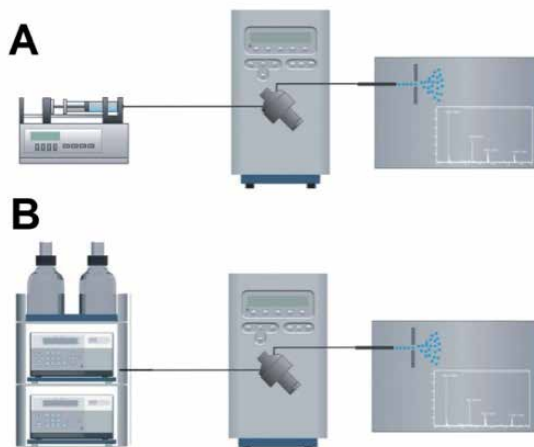
Schematics ReactorCell with expanded view of the thin-layer flow path. The cell includes an auxiliary electrode block with inlet/outlet (top), working electrode (bottom) and 50 µm spacer, volume approx. 0.7 µL.



ReactorCell



Schematics ReactorCell



Schematics ReactorCell set-up:
Direct infusion mode, i.e., EC/MS (A) and post-column separation mode, i.e., LC/EC/MS (B). Typical flow rates 5 to 20 $\mu\text{L}/\text{min}$.

Specifications ReactorCell (Basic Starter Cell)

Cell type	Three electrode, thin-layer reactor cell
Cell volume	approx. 0.7 μL (50 μm spacer) , 1.5 μL (100 μm spacer)
Spacers	50 μm
Working electrode diameter	8 mm
Working electrode area (wetted)	15 mm^2
Working electrodes (WE)	Included: Glassy Carbon (GC) , Magic Diamond™ (MD), gold (Au), platinum (Pt), Optional: silver (Ag), copper (Cu) , reducing electrodes: TiBlue™, TiGery™
Reference electrode	HyREF™ (Pd/H ₂)
Auxiliary electrode	Carbon-loaded PTFE
Wetted materials	PCTFE, FEP, Palladium, carbon-loaded PTFE, WE material (Au or Pt, GC, MD, Ag, Cu, TiO ₂)
Flow rate	Typically 1 – 20 $\mu\text{L}/\text{min}$
Max. pressure	40 psi / 2.8 bar
Fluidic connections	1/16" o.d. PEEK tubing, with 10-32 PTCFE fingertight connections
Electric connections	Cell cable for use with ROXY Potentiostat

Part no

Description

210.0040	ReactorCell kit consisting of: ReactorCell, spacers, reference electrode (HyREF) and working electrodes: Magic Diamond (MD), Glassy Carbon (GC), Pt and Au (each 1 x).
----------	--

Spare Parts

210.0913	HyREF reference electrode
210.2217	Spacer 50 μm
210.5007	Glassy Carbon (GC) working electrode
210.5010	TiBlue™ reducing electrode
210.5022	Platinum (Pt) working electrode
210.5032	Silver (Ag) working electrode
210.5037	Copper (Cu) working electrode
210.5050	Magic Diamond (MD) working electrode

Electrode Holder



Working electrode holder (assembly) with supplied electrodes: Pt, Au, GC and MD (left to right).

Antec Scientific (USA)
info@AntecScientific.com
www.AntecScientific.com
T 888 572 0012

Antec Scientific (worldwide)
info@AntecScientific.com
www.AntecScientific.com
T +31 71 5813333

